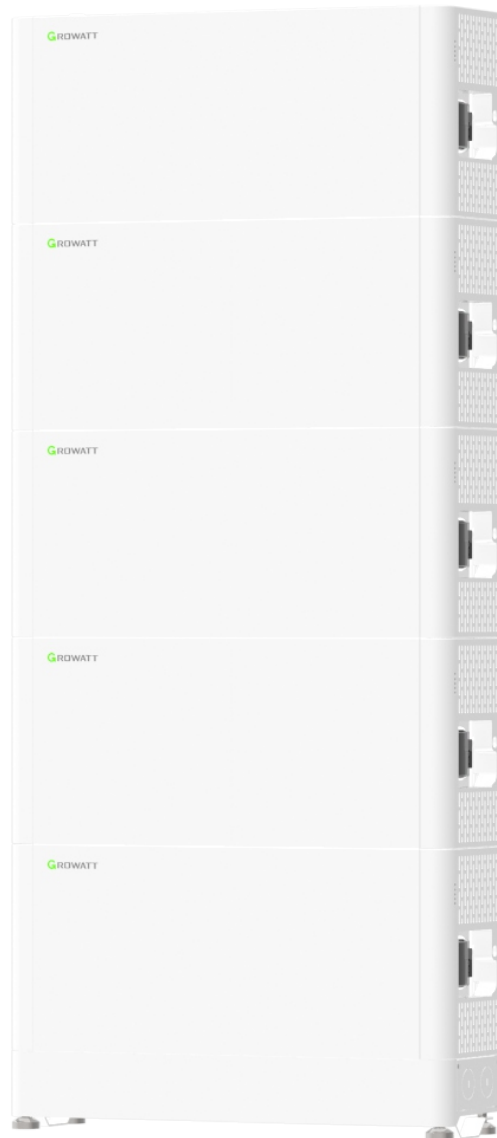
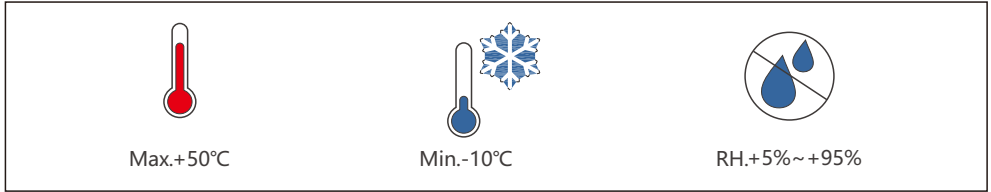


Quick Installation Guide  
ALP 5.0L-E1-AU

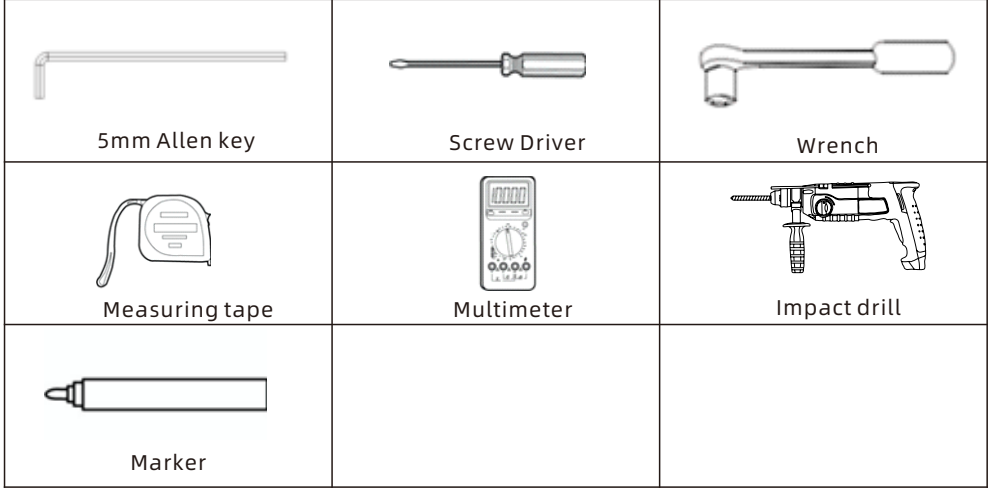


Installation environment

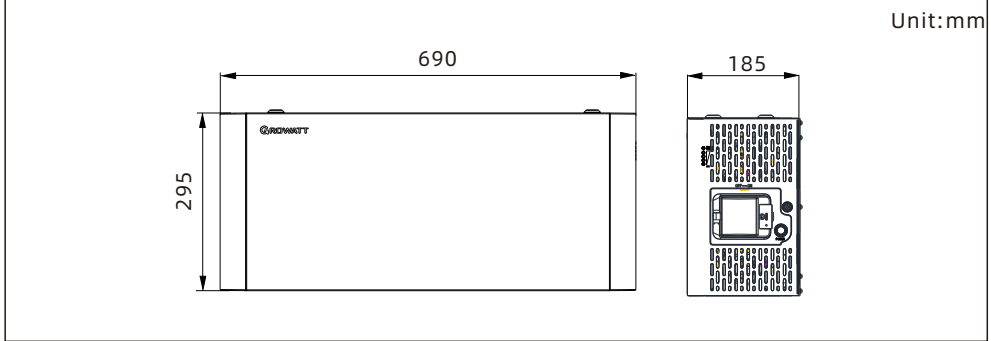


Installation tools

The following tools are required to install the PACK:

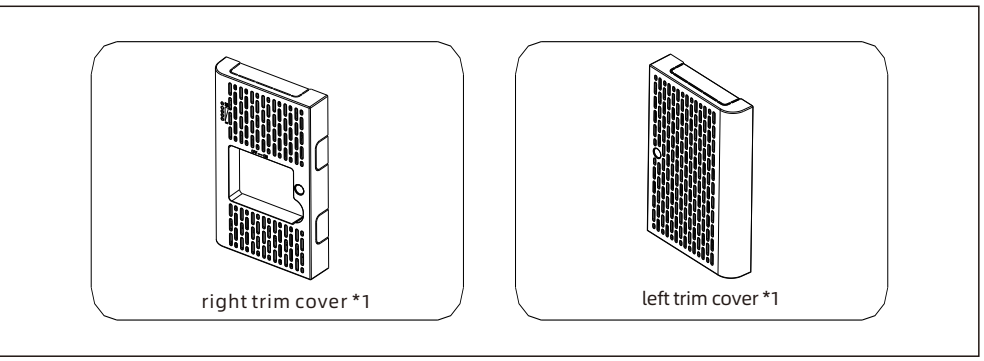
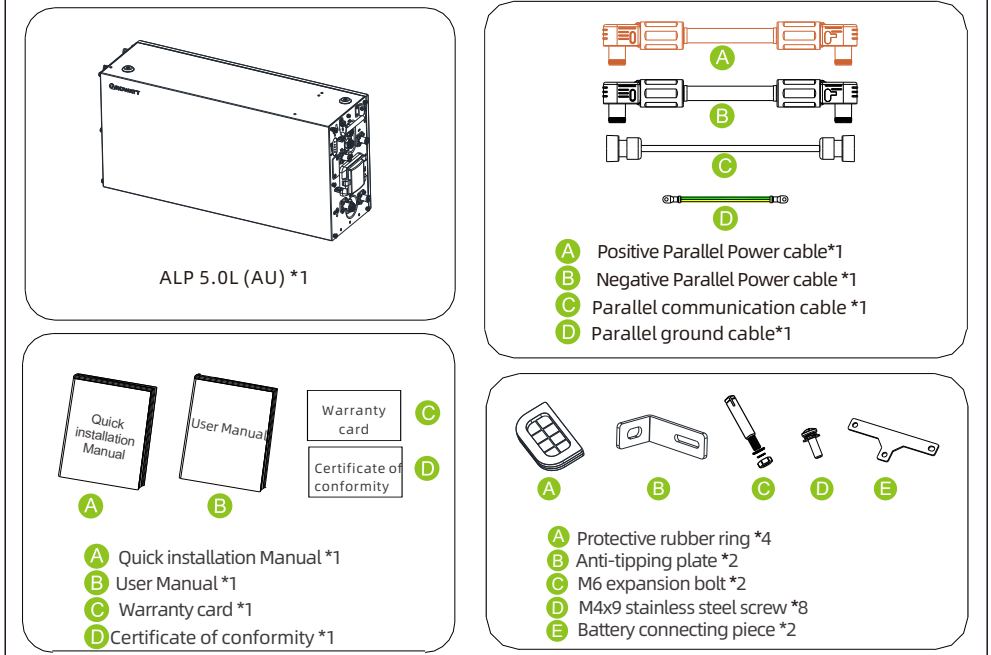


Dimensions

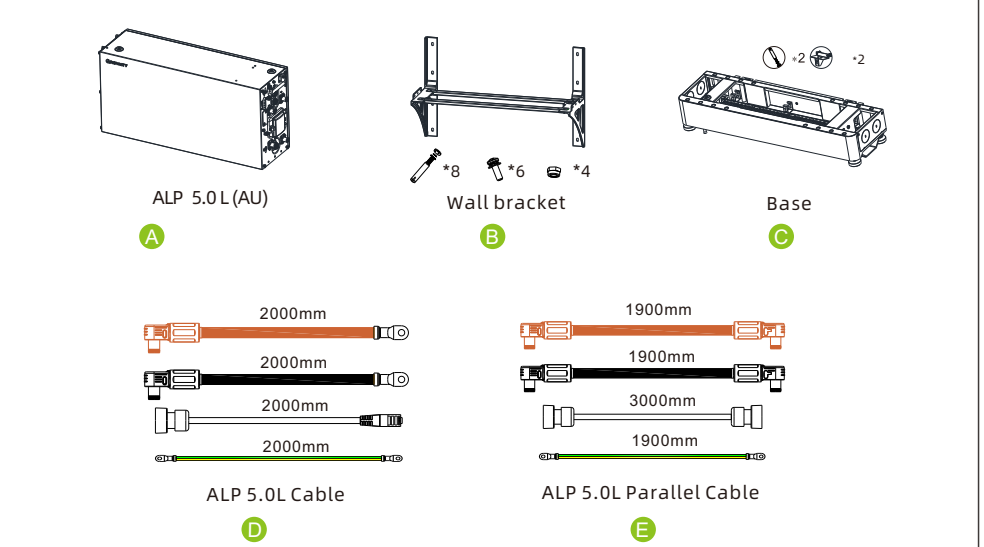


1.Check

1-1 Check the Packing List



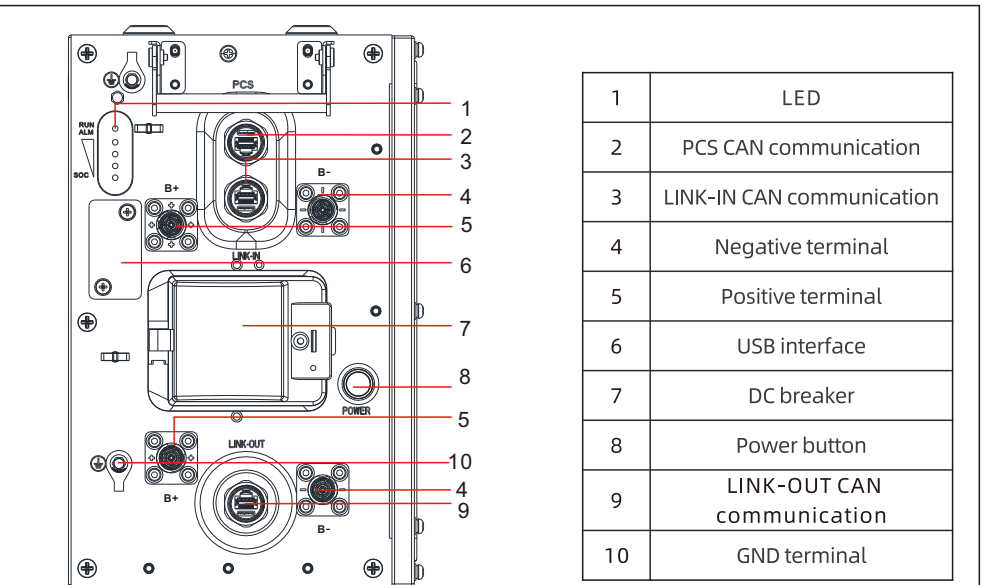
1-2 Check the accessories



Installation Method	Compound Mode
Standard wall-mounted installation	A*N+B+D
Standard floor-mounted installation	A*N+C+D
Wall-mounted battery system stacked in two	A*N+B*2+D+E
Floor-mounted battery system stacked in two	A*N+C*2+D+E

Note: "N" stands for the number of batteries.

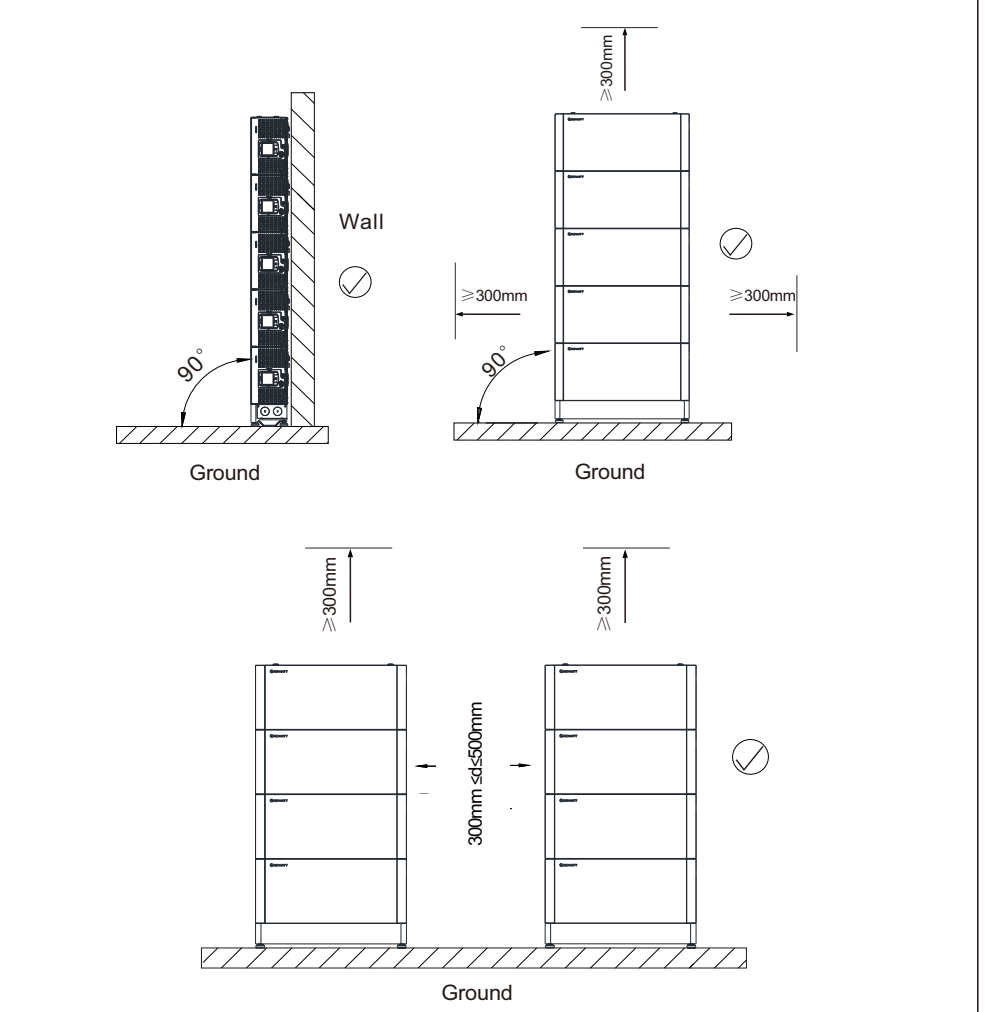
2.Introduction to the battery operation panel



1	LED
2	PCS CAN communication
3	LINK-IN CAN communication
4	Negative terminal
5	Positive terminal
6	USB interface
7	DC breaker
8	Power button
9	LINK-OUT CAN communication
10	GND terminal

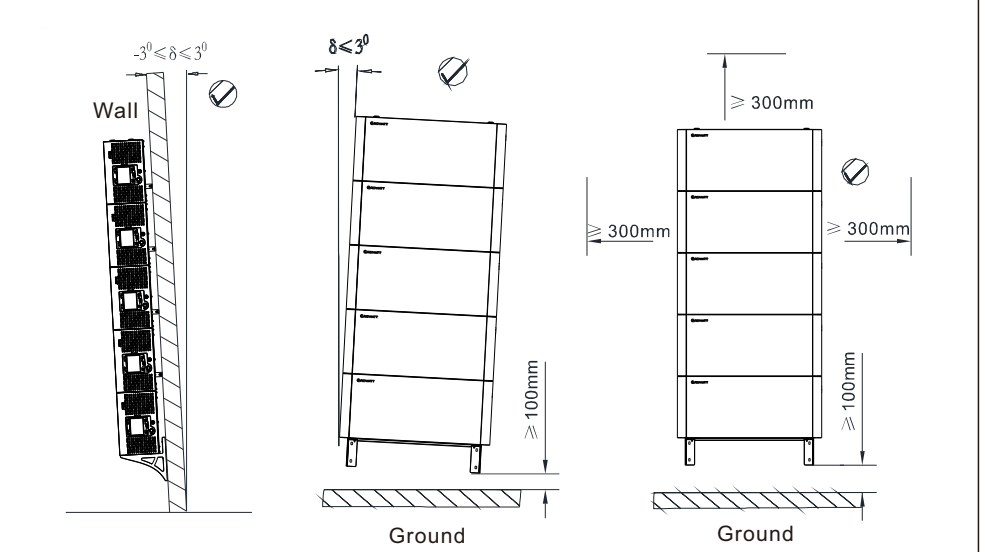
3.Basic installation requirements

3-1 Floor-mounted Installation



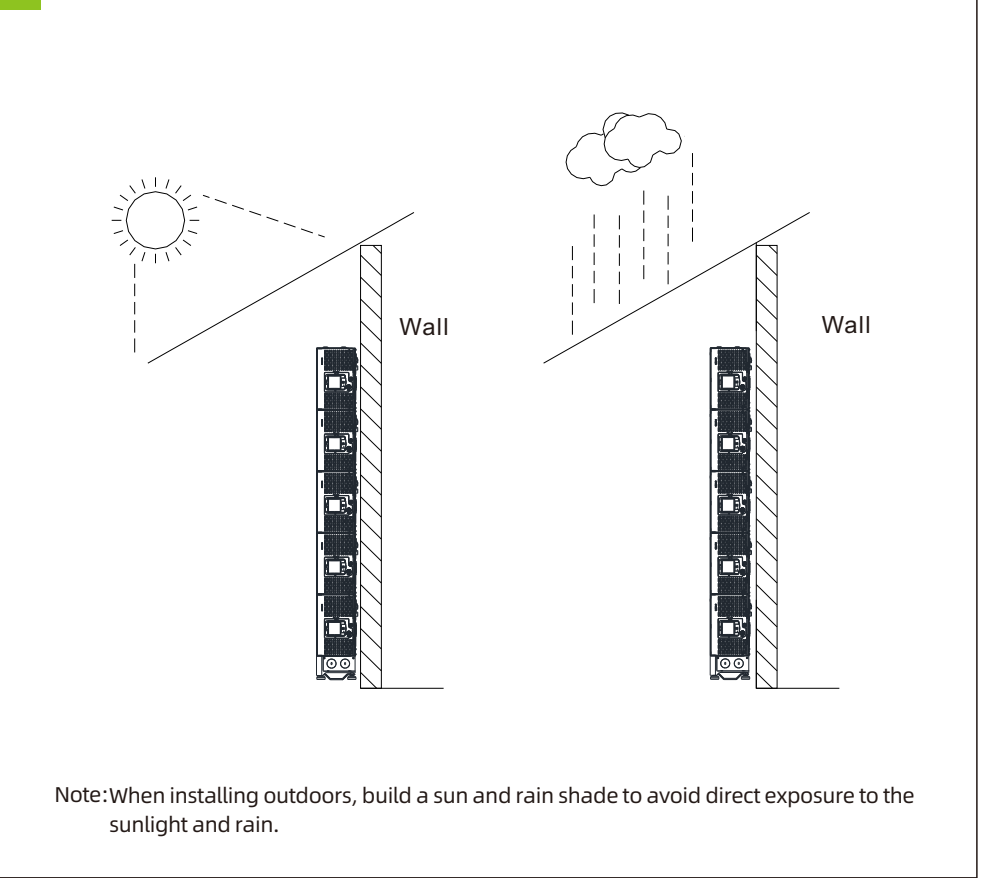
Note: Do not turn the PACK upside down, and ensure that the floor is level.  
A maximum of 5 battery packs can be stacked. If there are more than 5 of them, please install them in two lines.

3-2 Wall-mounted Installation



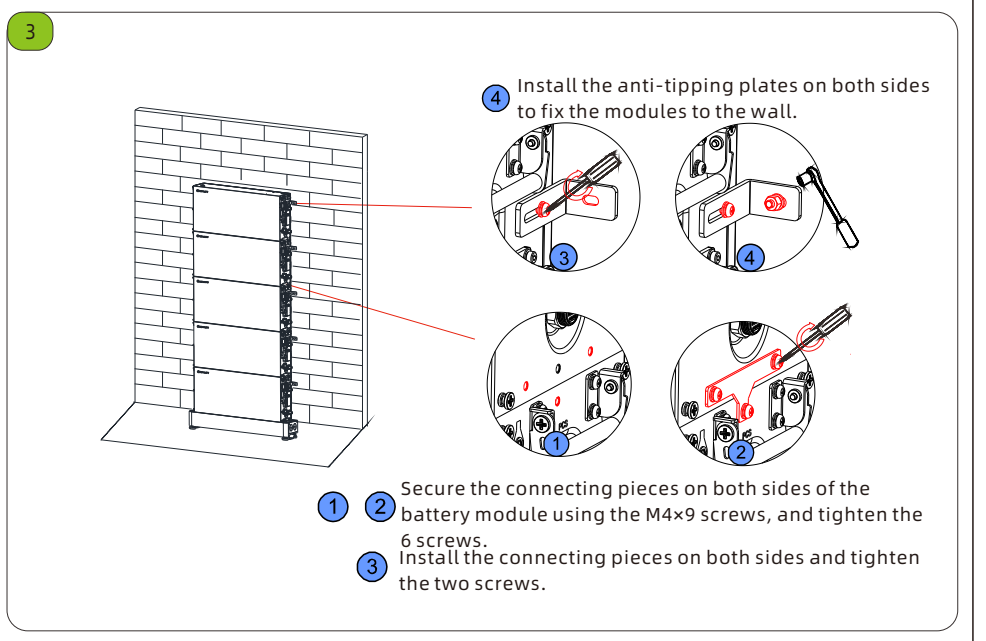
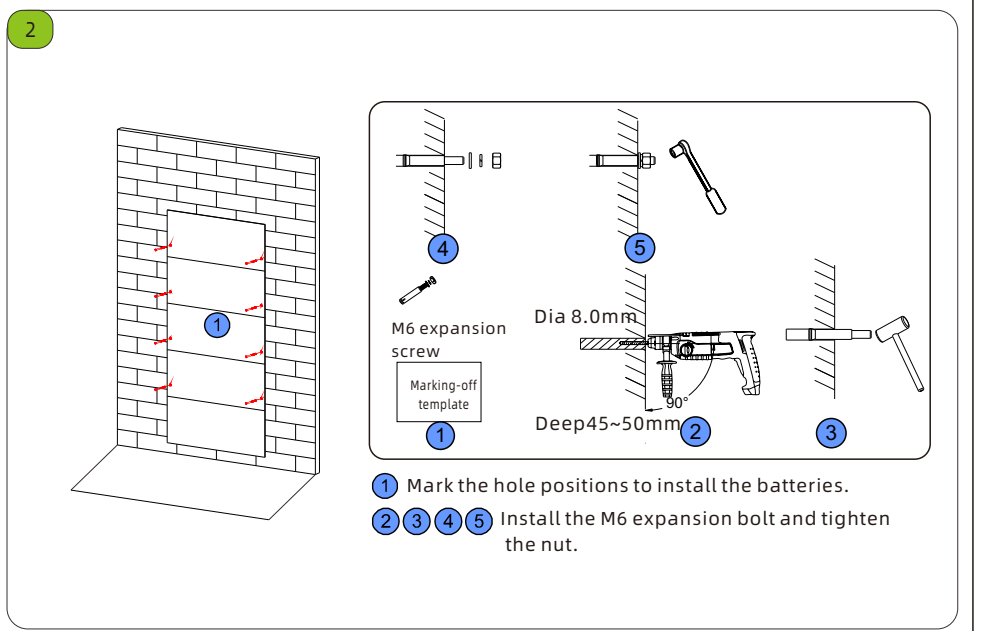
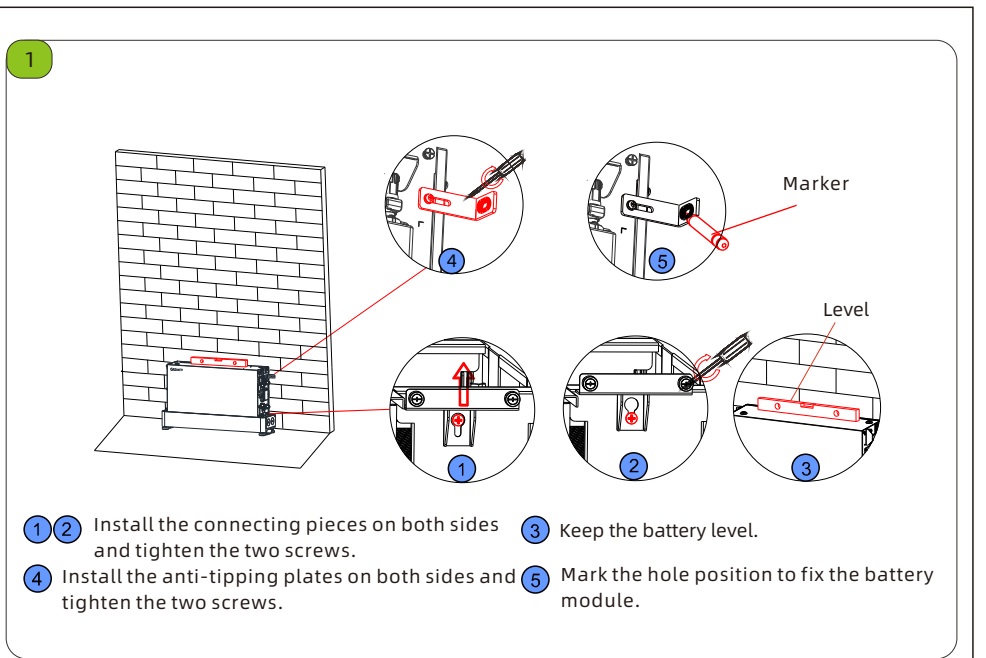
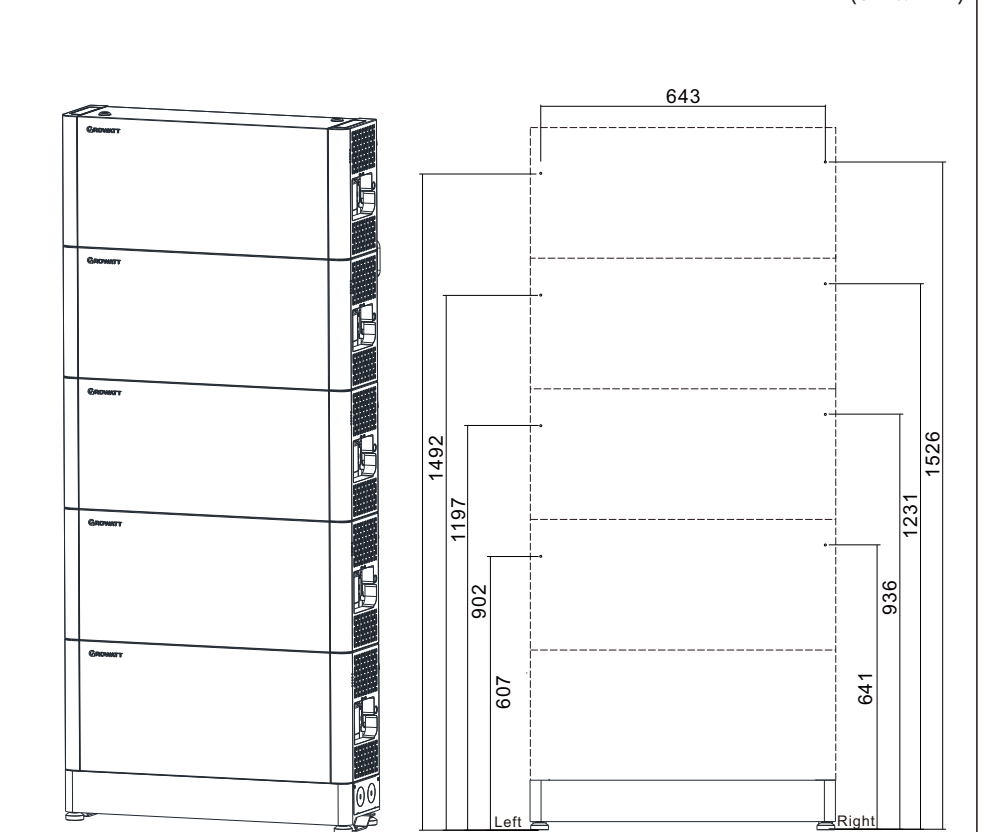
Note: The number of battery modules in wall-mounted installation should not exceed five.  
Ensure that load capacity of the wall exceeds 280kg.

3-3 Outdoor installation



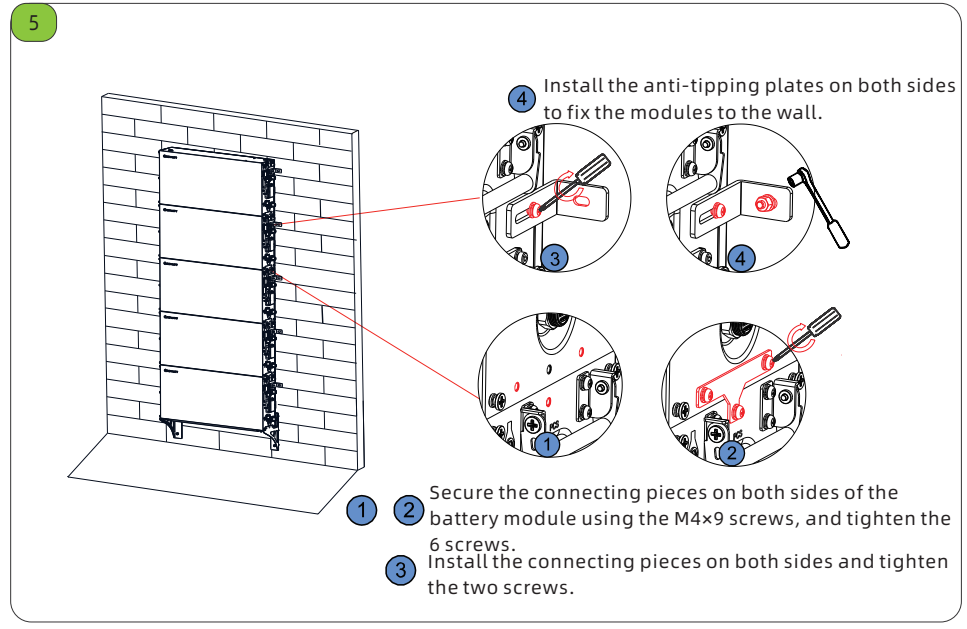
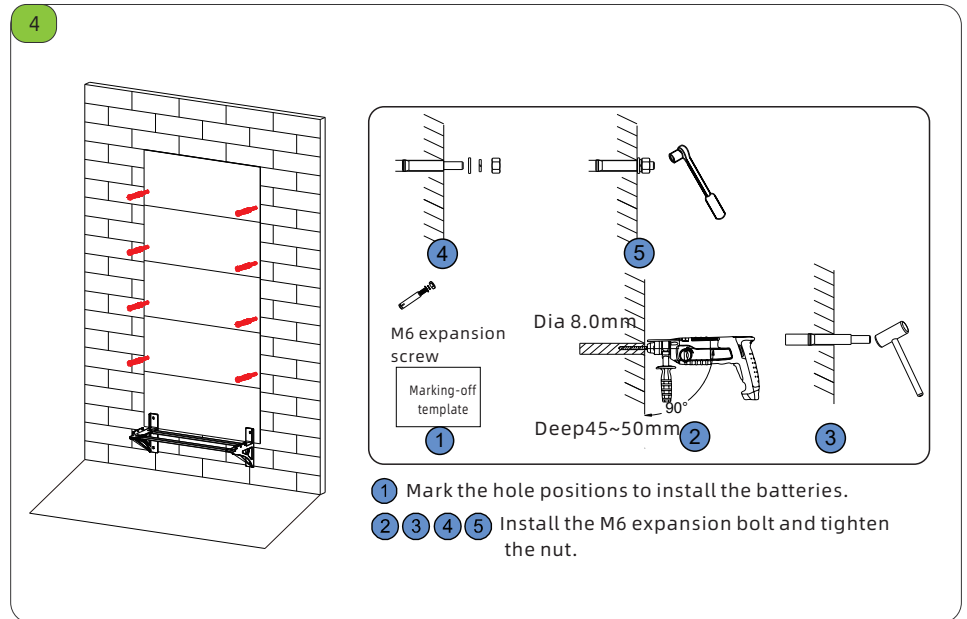
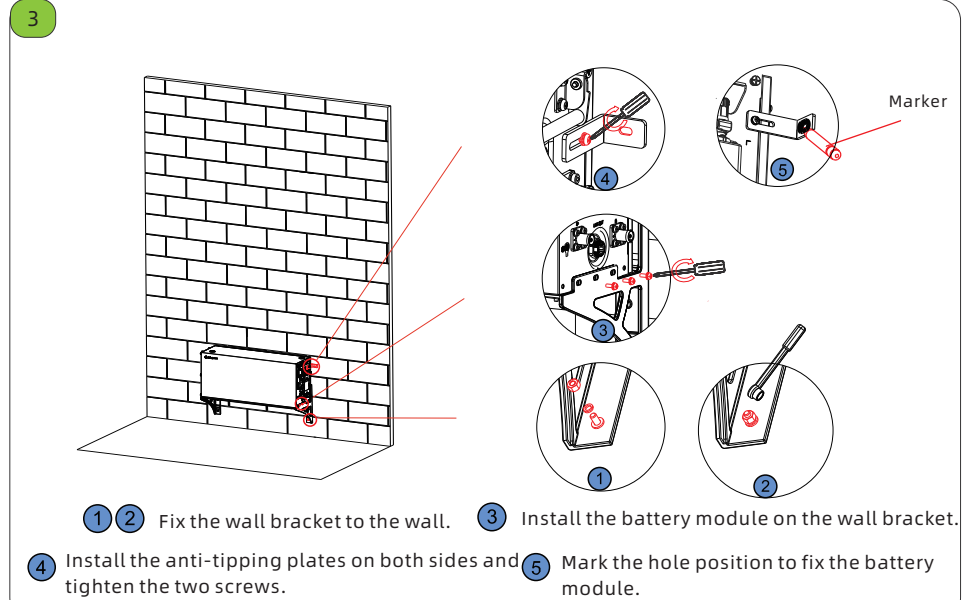
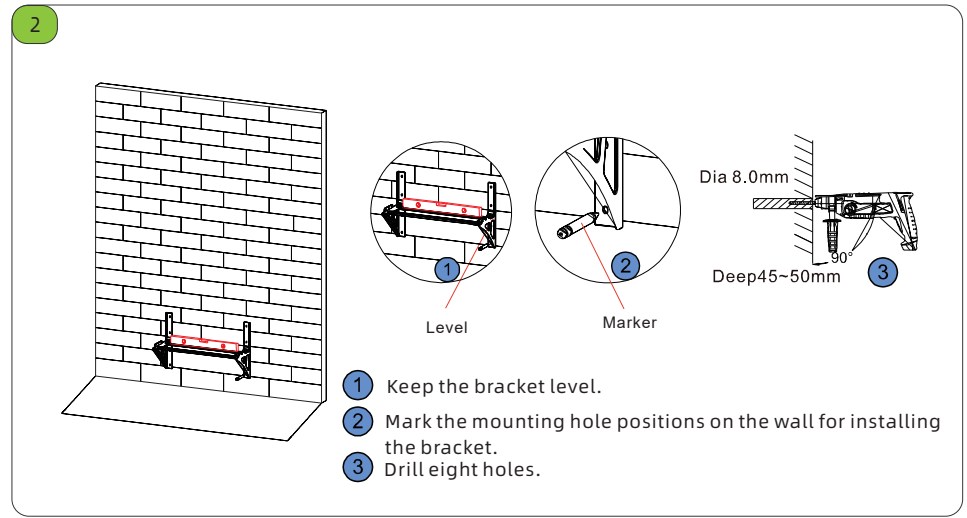
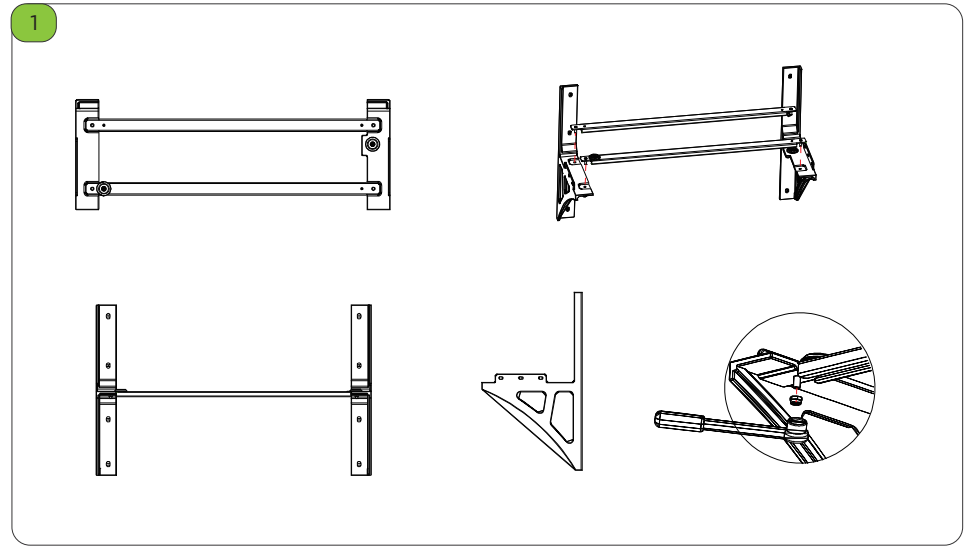
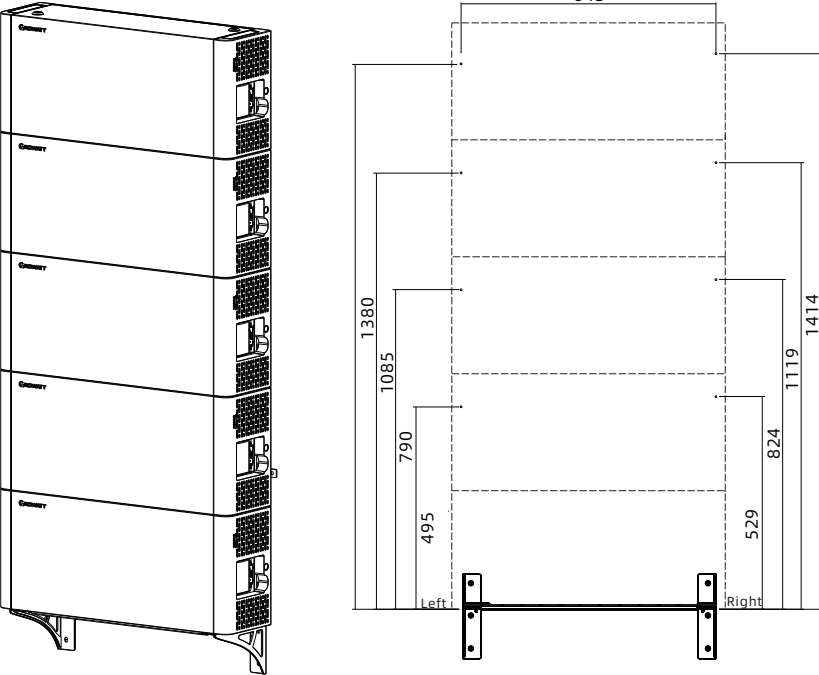
4. Installation

4-1 Hole dimensions

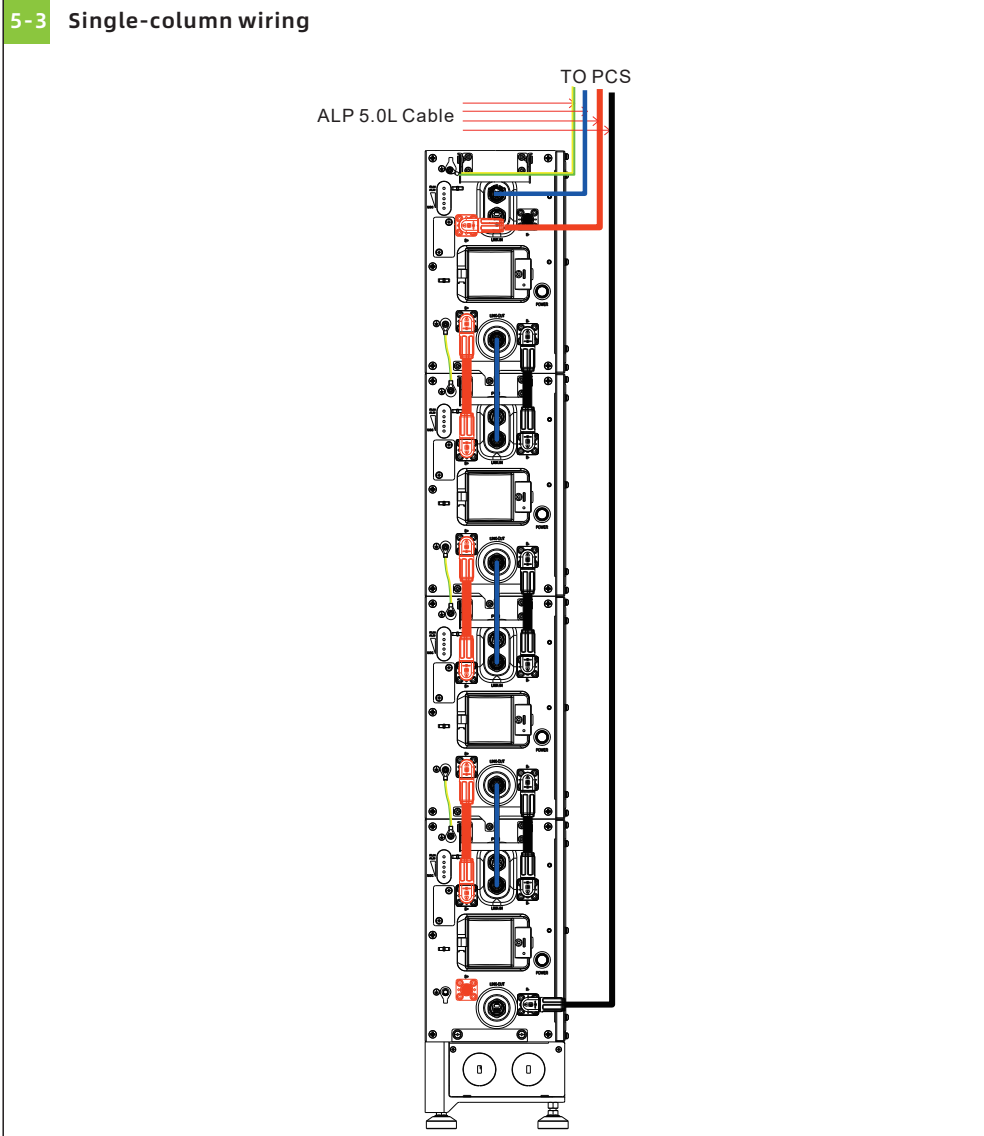
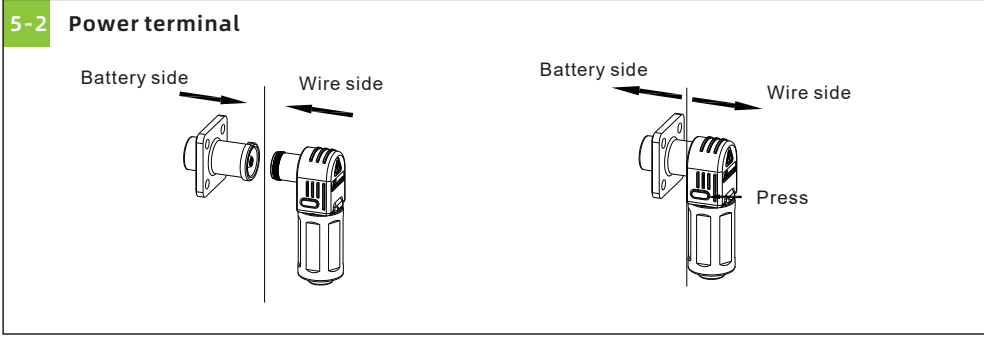
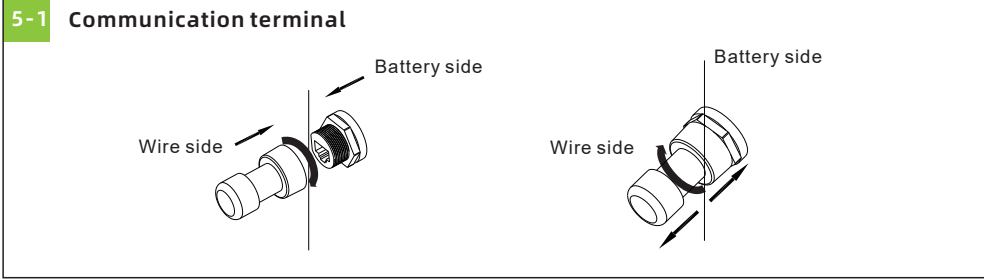


4-2 Wall-mounted Installation (unit: mm)

Hole dimensions

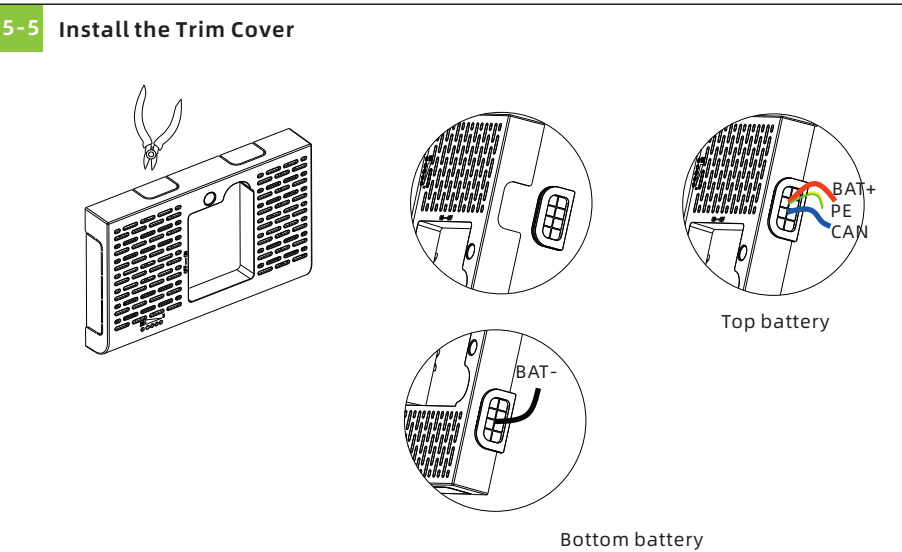
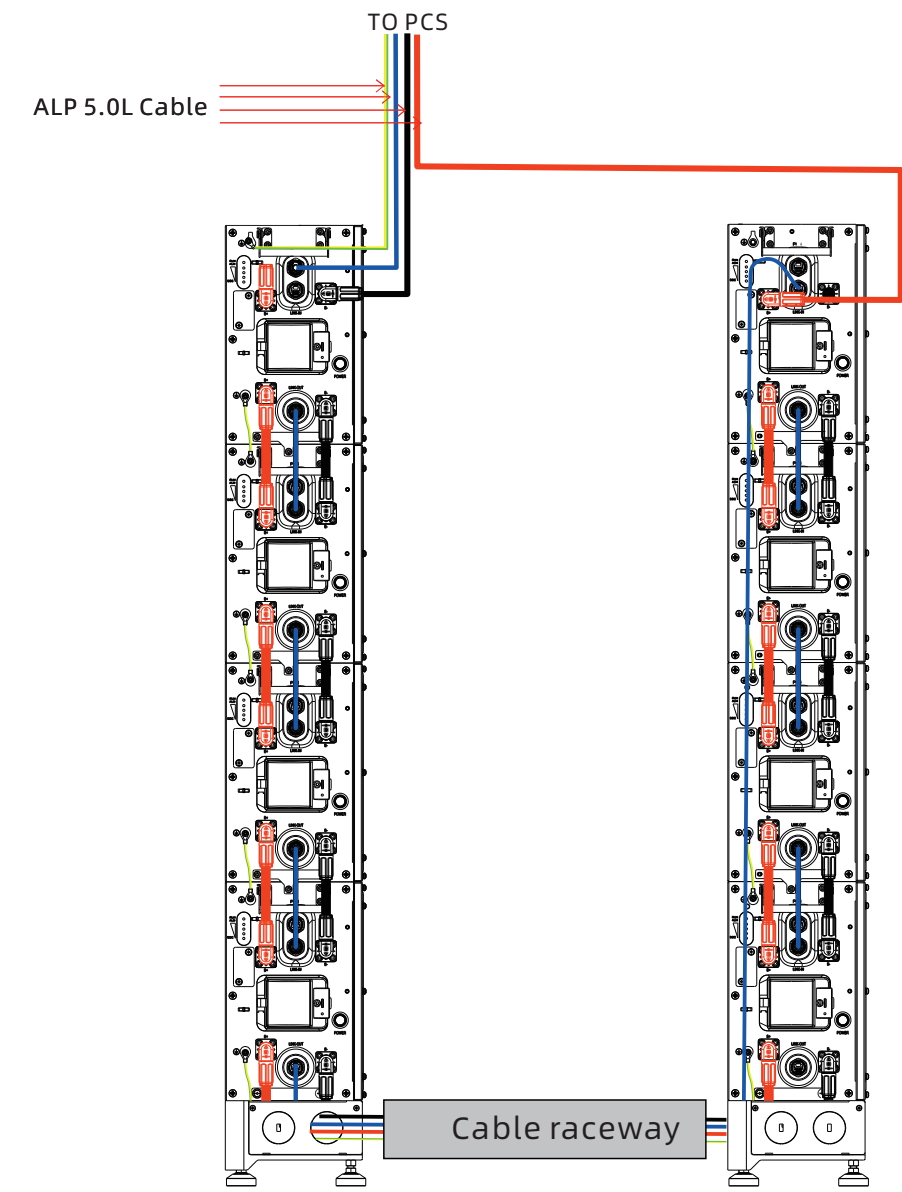


5. Electrical Connection

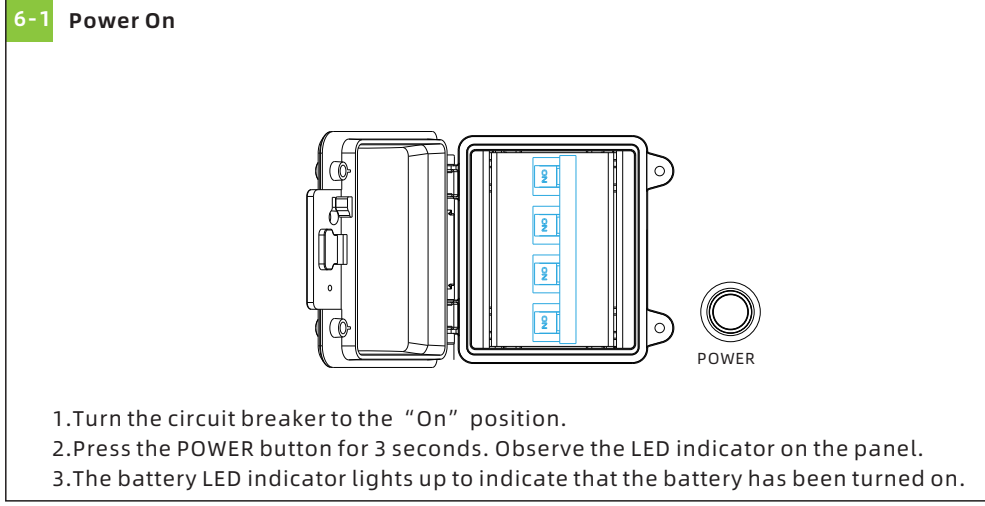


**Note:**  
1.The battery is not allowed to be installed in the running state, and all the RUN lights of battery modules should be off before installation.  
2.To ensure system security, do not forget to install the ground cable.  
3.For the power cables connected to PCS, the positive power cable is drawn from the top battery

5-4 Two-column wiring



6.Power on and off the Battery



Power on the PACK by pressing the power button(t>3S)		
Serial	Procedures	Acceptation criteria
1	Connect the battery and PCS	Make sure the wiring harnesses are well connected
2	Switch on the breaker of the	Make sure the breaker is ON
3	Press the POWER button for three to five seconds. Observe the LED indication on panel.	1.If both RUN/ALM and SOC lights are on normally, PACK is powered on successfully. 2.If RUN/ALM light turns red, there is a fault. Do not restart the equipment until the fault is

Power on the PACK by PCS		
1	Connect the battery and PCS	Make sure the wiring harnesses are well connected
2	Switch on the breaker of the PACK	Make sure the breaker is ON
3	Power on the PCS. PCS outputs a wake up signal of 5V or an output main circuit voltage signal of 46-58V	1.If both RUN/ALM and SOC lights turn on normal, PACK powers on successfully. 2.If RUN/ALM light turns red, there is a fault and you should solve it before powering on the PACK again.

**6-2 Power off**  
Press the power button to turn off the PACK and five LED lights will flicker three times. If multiple packs are connected in parallel, turning off one of the PACKs will

**7.Service and contact**

Shenzhen Growatt New Energy Co., Ltd.  
4-13/F, Building A, Sino-German (Europe) Industrial Park,  
Hangcheng Blvd, Bao'an District, Shenzhen, China

T +86 755 2747 1942  
E service@ginverter.com  
W en.growatt.com

Download Manual

Growatt New Energy

GR-UM-309-A-01(PN:044.0110401)