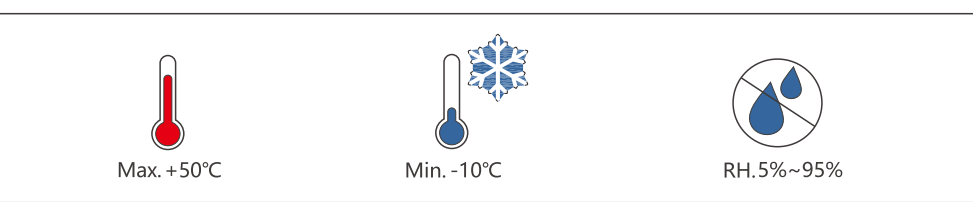


Quick Guide
APX 5.0~30.0P-S0

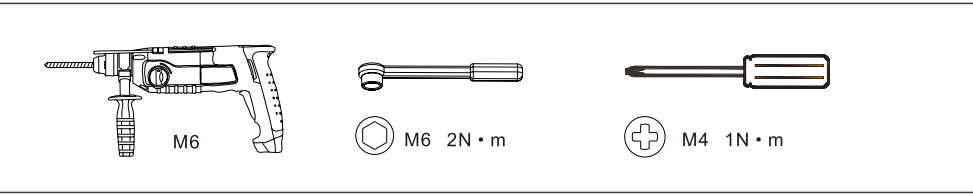


ShenZhen Growatt New Energy Co.,Ltd.

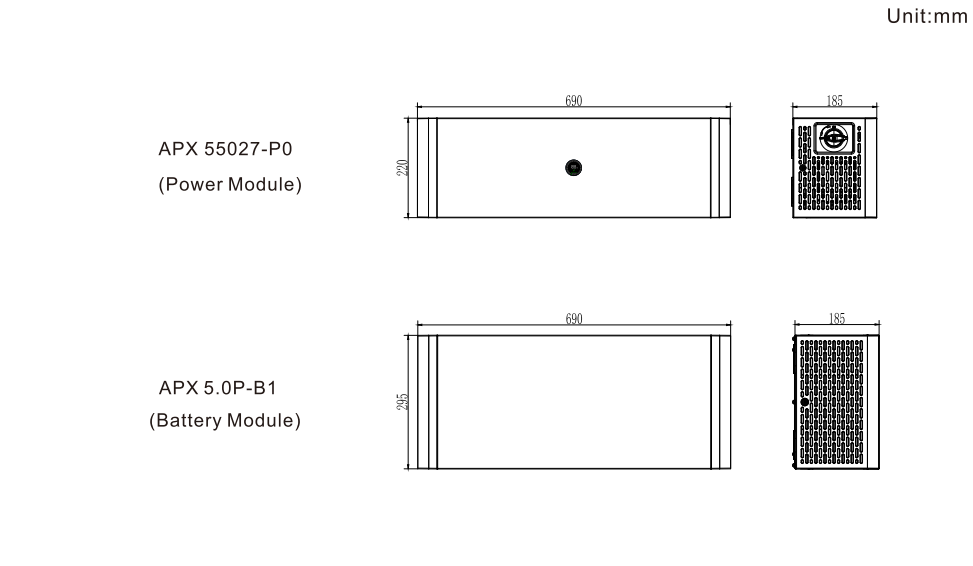
Environmental conditions



Installation tools

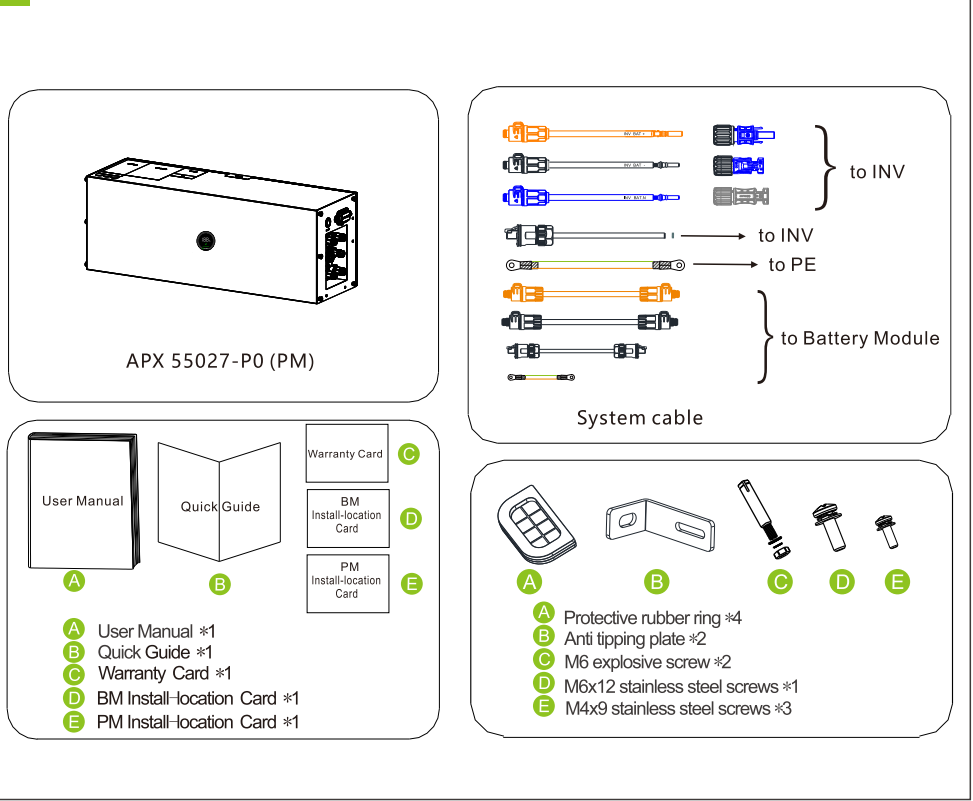


System size

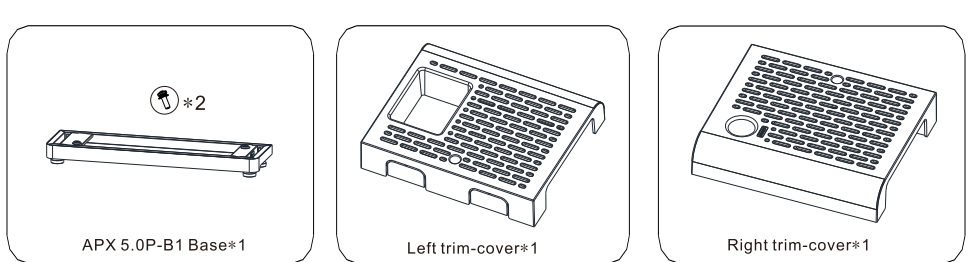


1.Inspection upon delivery

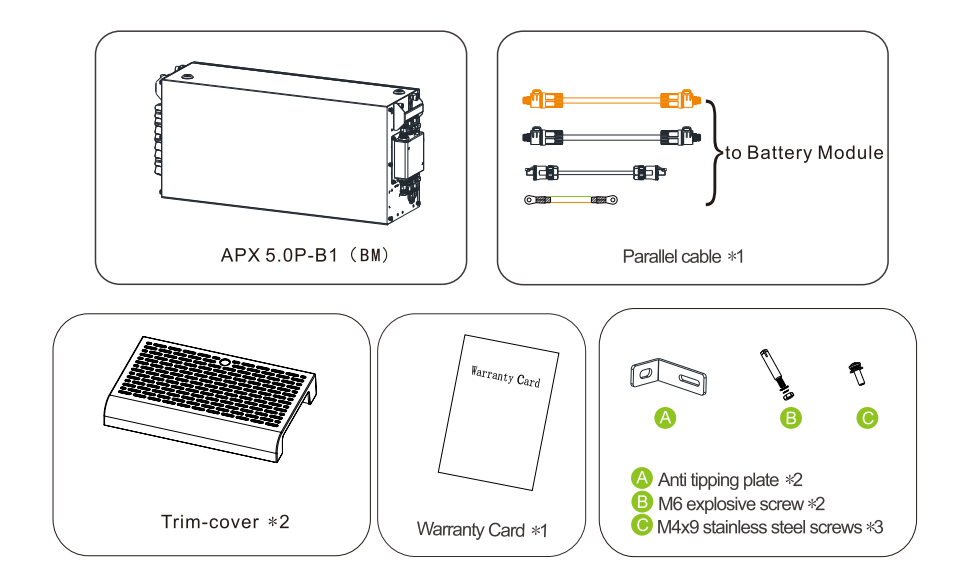
1-1 Checking the APX 55027-P0 packing list (New packaging)



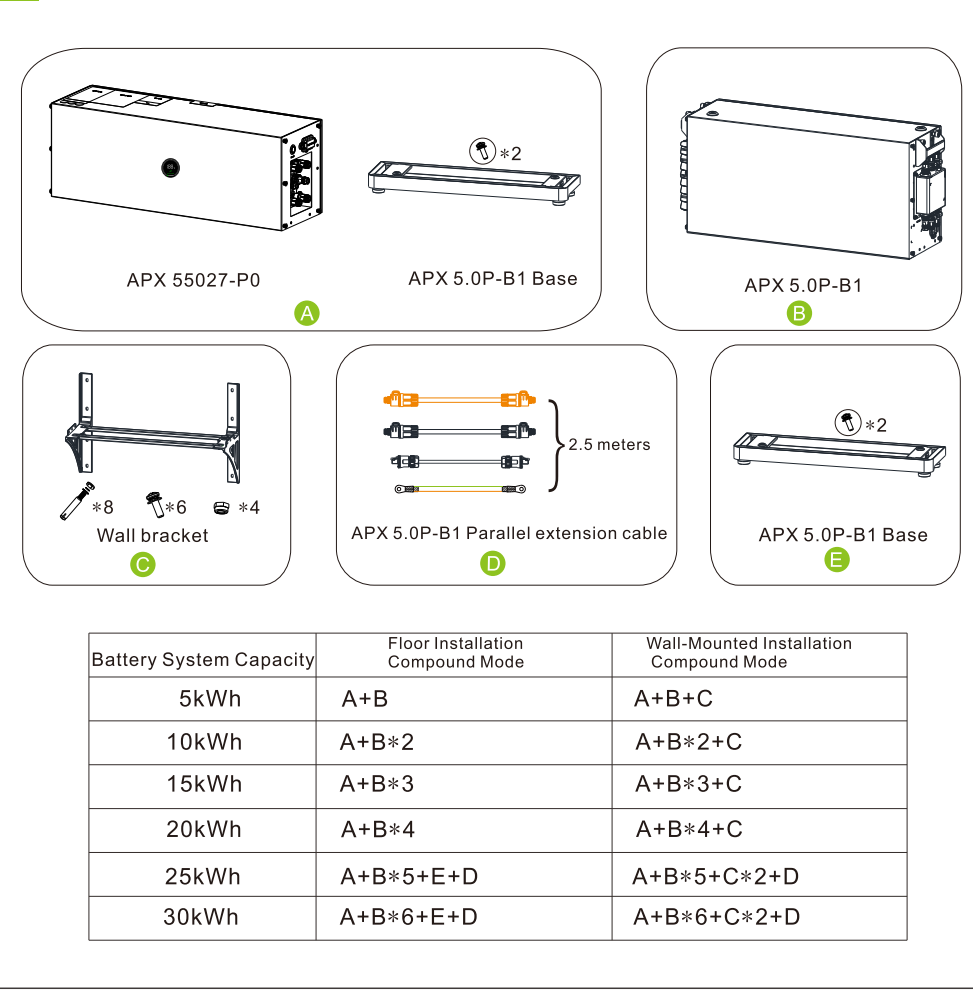
1



1-2 Check APX 5.0P-B1 List

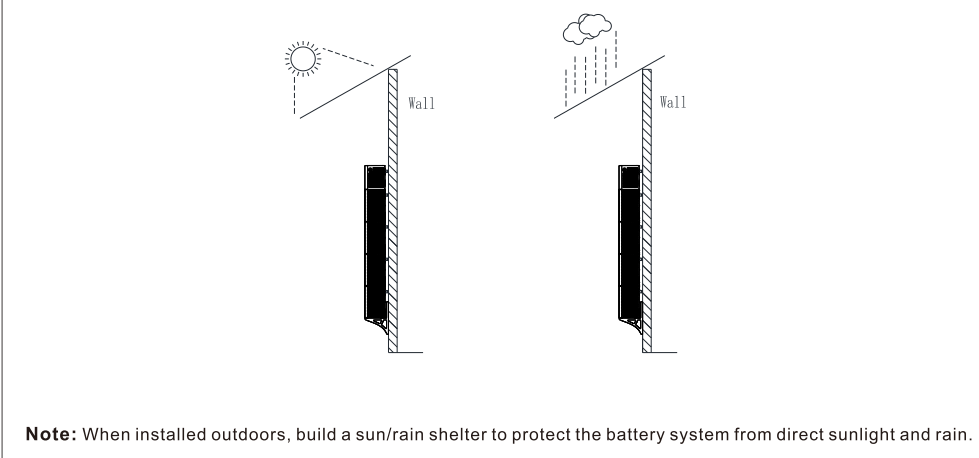


1-3 Check the APX Battery System of different capacities



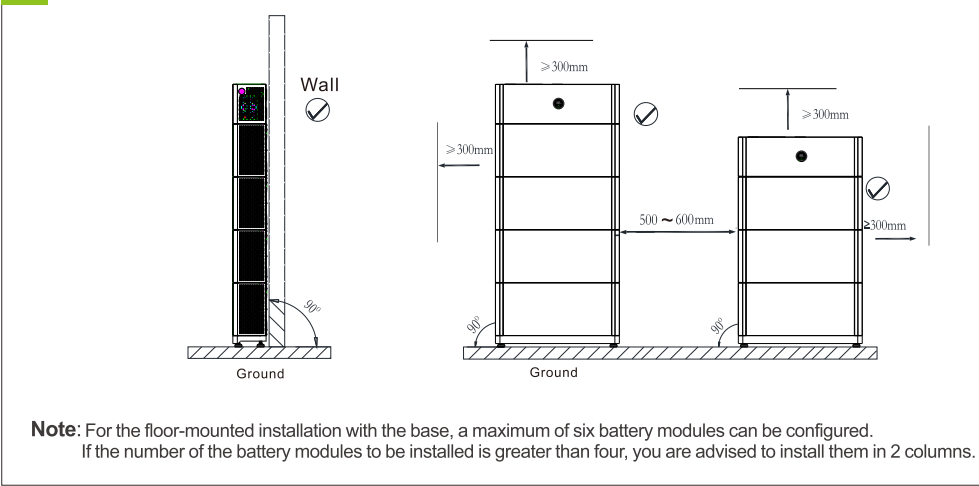
2

2.Installation environment requirements

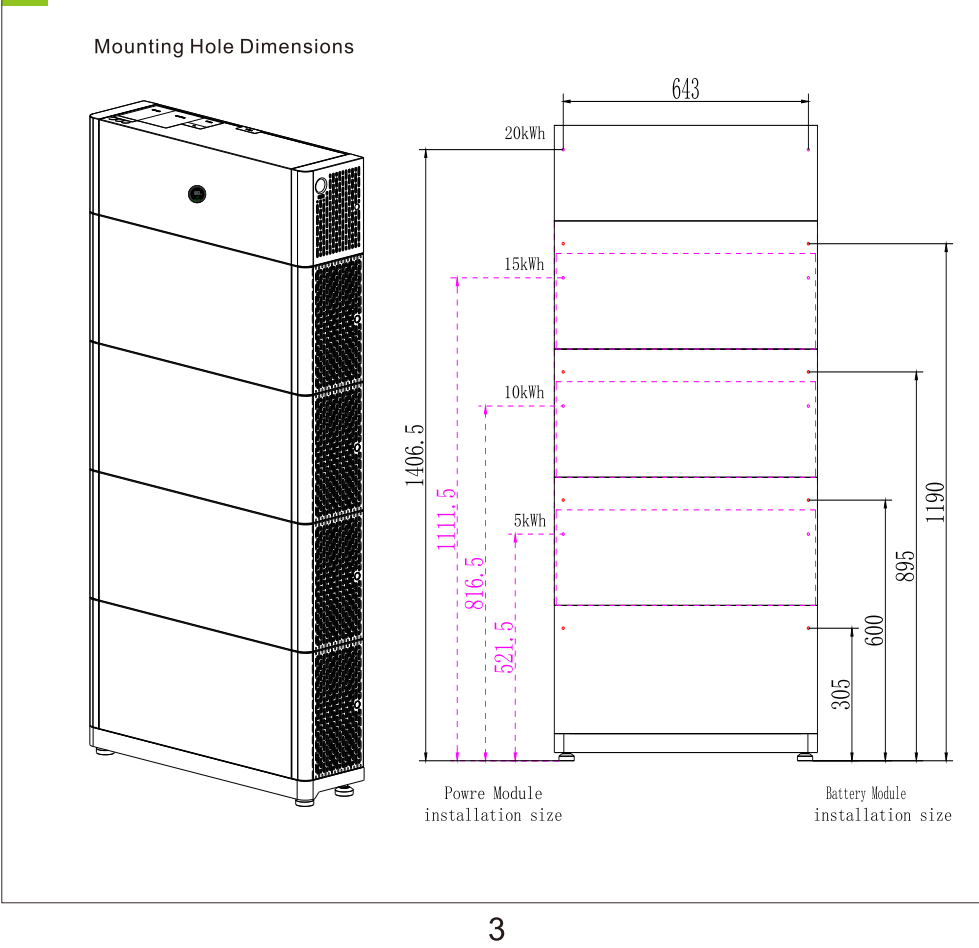


3. Floor-mounted installation

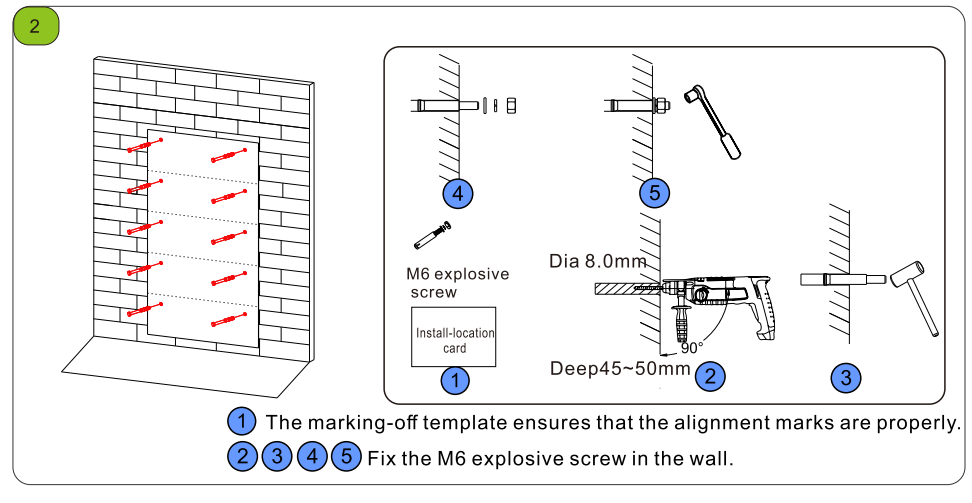
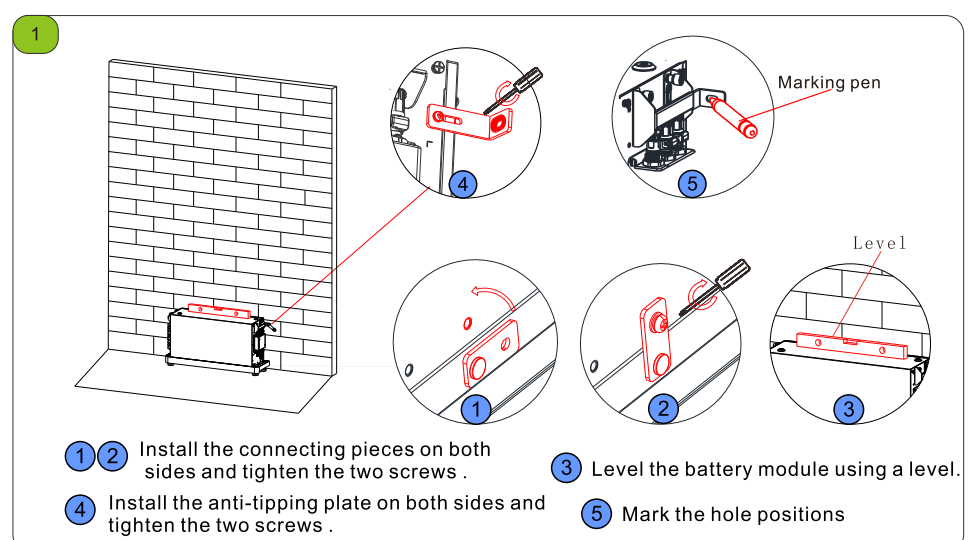
3-1 Installation location requirements



3-2 Installation procedure



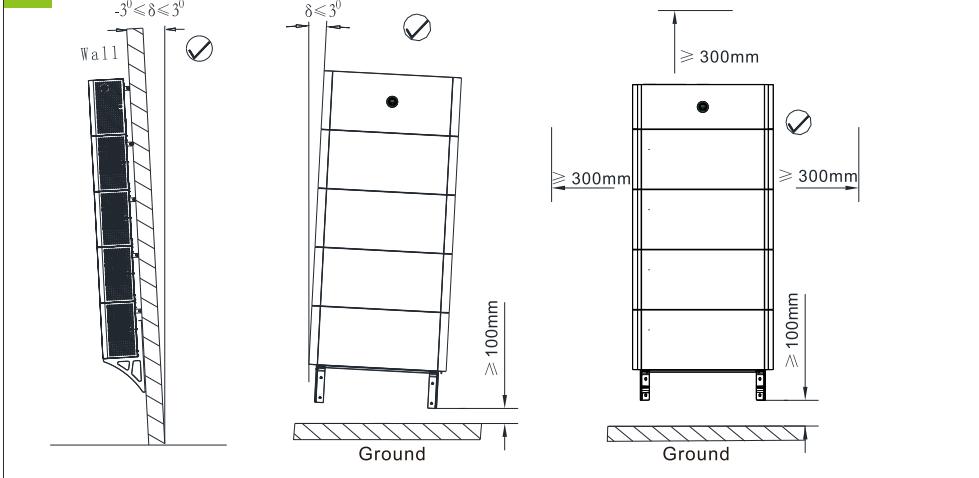
3



4

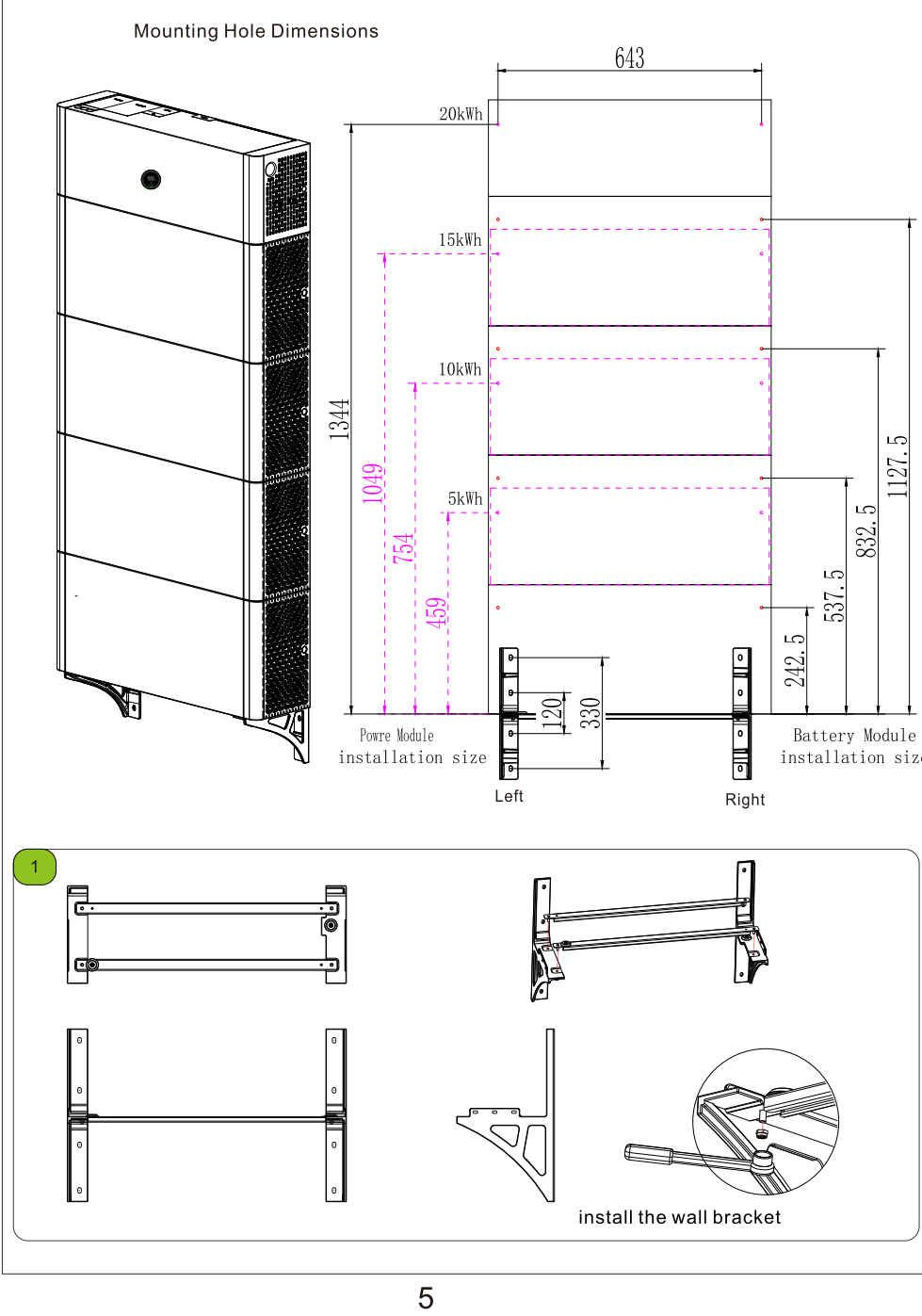
4. Wall-mounted installation

4-1 Installation location requirements



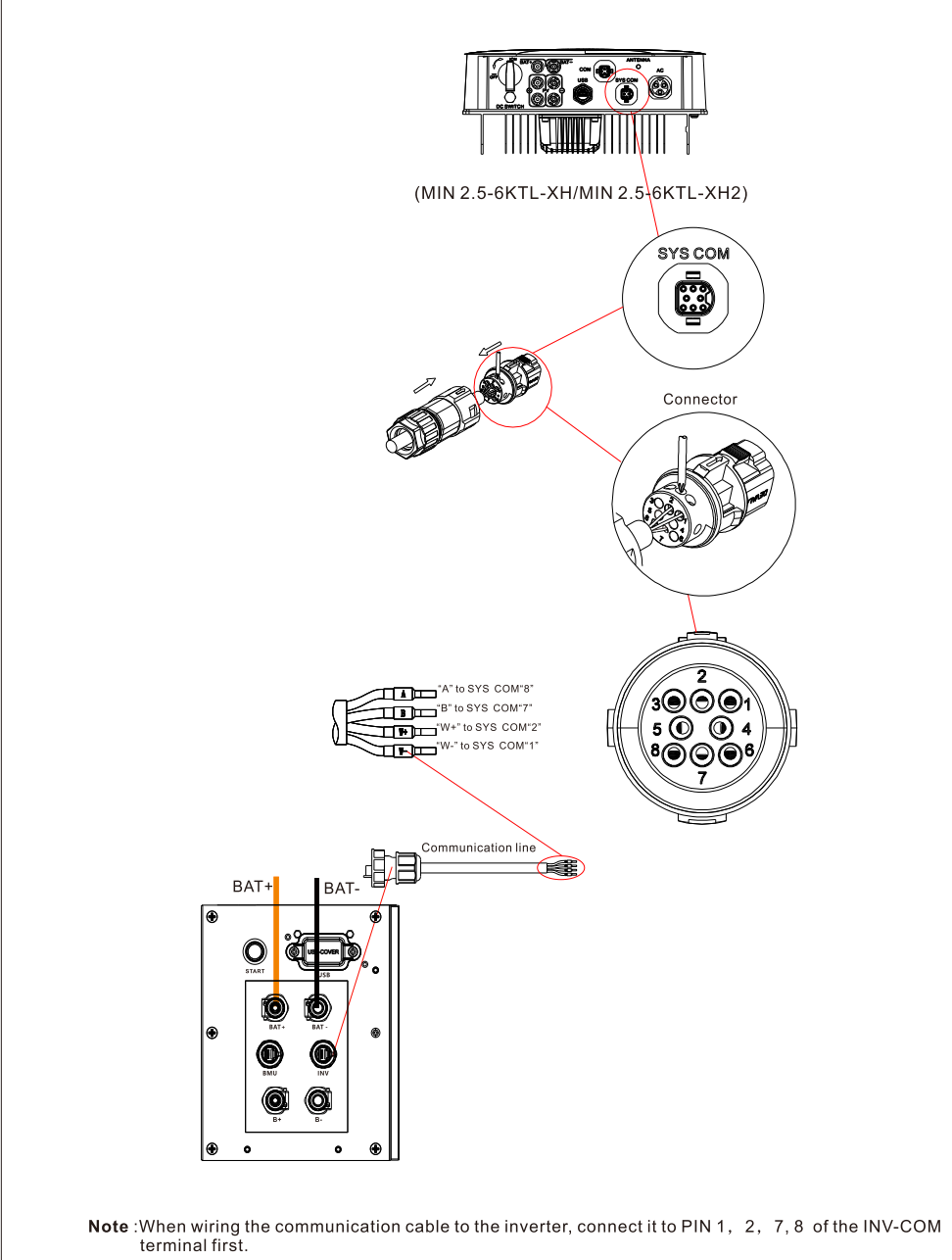
Note: When mounted on the wall, a maximum of six battery modules can be configured. If the number of the battery modules to be installed is greater than four, you are advised to install them in 2 columns. Ensure that the load-bearing capacity of the wall exceeds the total weight of the system (PM weighs 10 kg and each BM weighs 50 kg).

4-2 Installation procedure

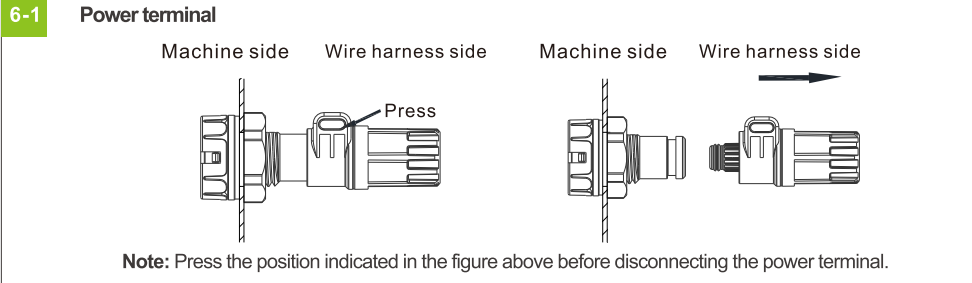


5

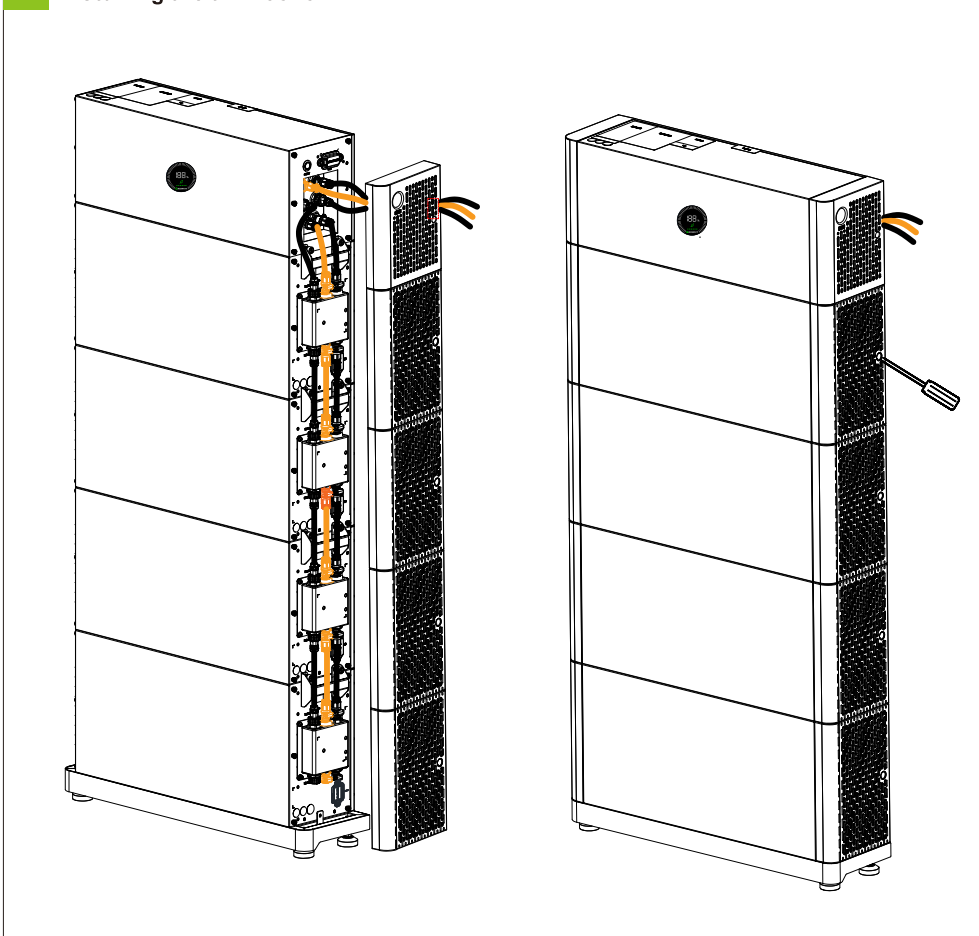
| APX 5.0~30.0P-S0 | | | (MIN 2.5-6KTL-XH/MIN 2.5-6KTL-XH2) | | |
|------------------|------------------------|------------|------------------------------------|------------------------|------------|
| Silk screen | Terminal serial number | Definition | Silk screen | Terminal serial number | Definition |
| INV | 1 | WAKE-(W-) | SYS COM | 1 | Enable- |
| | 2 | WAKE+(W+) | | 2 | Enable+ |
| | 7 | RS485_B(B) | | 7 | BAT_B |
| | 8 | RS485_A(A) | | 8 | BAT_A |



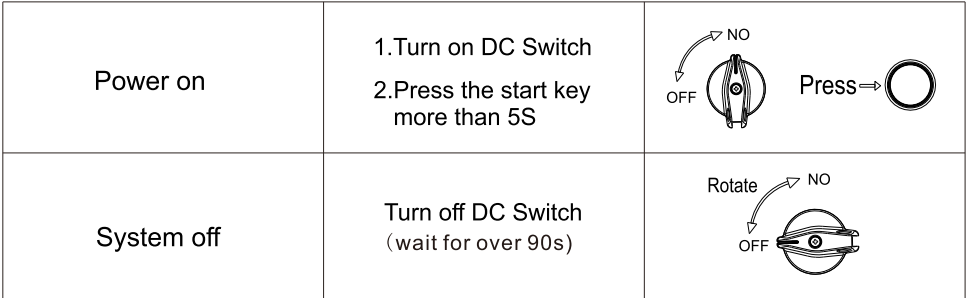
6. Terminal connection



6-2 Installing the trim-cover



7. Powering on/off the battery system



Note:1. Before performing maintenance and repair work, ensure that the AC circuit breaker and the PV switch of the PCS, as well as the switch of the APX are disconnected. Wait for 15 minutes after the system is powered off and make sure that the LOGO (GROWATT) indicator on the APX is off. Do not perform any operations until the system is completely shut down.
2. When multiple battery systems are used in parallel connection, you only need to press the start key of and module to start the system.
3. This product cannot be powered on with AC power from the grid directly.
4. Monitoring information of this product will be uploaded to the server via the data logger connected to the inverter. For details, please refer to the User Manual of the specific data logger.
5. The content of this document is continually reviewed and amended, where necessary. Growatt reserves the right to make changes to the material at any time and without notice. Unless otherwise agreed, this document is for quick installation guidance only. All information and suggestions in this document do not constitute a warranty of any kind, express or implied. Growatt reserves all rights for final interpretation.

8.Service and contact



GR-UM-379-A-01(PN:04.0128800)